



**Digital Transformation for Private  
Foundations**  
Brenda Kahler and Marlena Wong

# Today's Presenters



**Marlena Wong**  
Chief Financial Officer  
[mwong@koret.org](mailto:mwong@koret.org)



**Brenda Kahler**  
Senior Manager, Consulting  
[Brenda.Kahler@armaninoLLP.com](mailto:Brenda.Kahler@armaninoLLP.com)

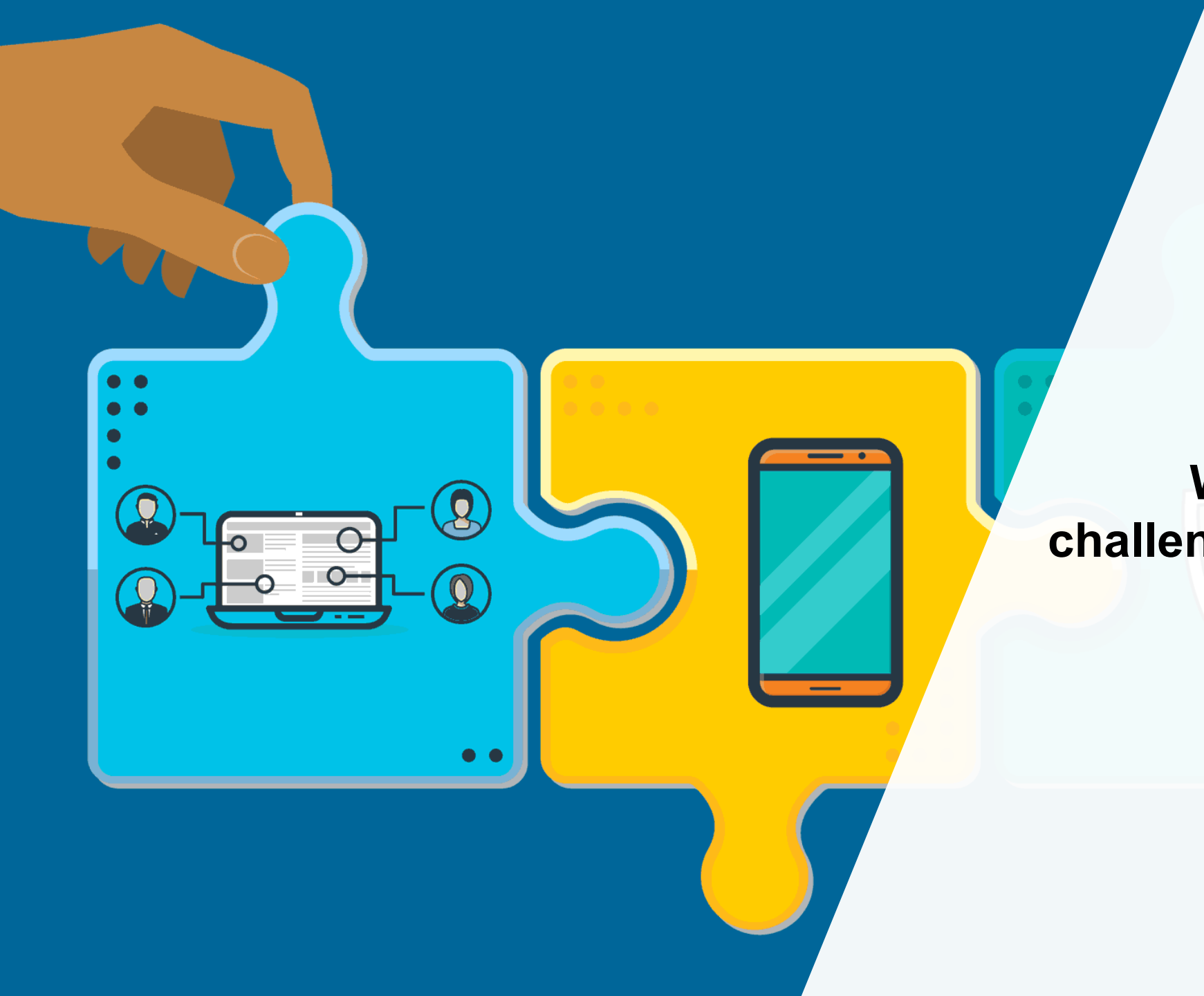


# **Koret's Mission**



# TRANSFORMATION

**What was going on at Koret  
that prompted the need for  
digital transformation?**



**What were some of the challenges your organization was facing?**

01010101010101 deconi human  
Global\_Tech  
command creation mode path  
retina path 01HG Deoded error

01010101010101 deconig  
humanGlobal\_Tech  
command  
creation maode path 1010HER  
010101Deoded error

01010101010101 deconi human  
Global\_Tech  
command creation mode path  
retina path 01HG Deoded error



# Comparing ERP Solutions




**How did integration options  
play into your decision for a  
new system?**



**How are the changes being received culturally?**



A person wearing a white lab coat is holding a tablet computer. The tablet screen displays a bar chart with four bars of increasing height. In the background, a laptop is open on a desk, showing a pie chart on its screen. There are also some papers and a pen on the desk. The scene is brightly lit, suggesting an office or laboratory environment.

**How has it impacted your team  
and their day to day roles?**



**Did you face any internal barriers to getting these projects approved?**



**How did you get budget, buy in, etc. to make this happen?**



**Let's talk about the  
vision you have for the future.  
What does the big picture look  
like?**



**What are the goals you have  
for the future?**



**Would you do anything  
differently?**



**How has integrating technologies benefited your processes and how does this effect those in the community you are trying to serve?**



## Contact Us

**Marlena Wong**

Chief Financial Officer

[mwong@koret.org](mailto:mwong@koret.org)

**Brenda Kahler**

Senior Manager, Consulting

[Brenda.Kahler@armaninoLLP.com](mailto:Brenda.Kahler@armaninoLLP.com)

**armanino** 